

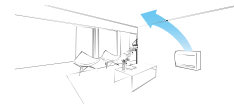
CONSOLE



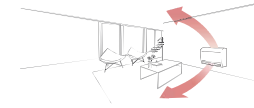
Optimized Air Flow for Cooling & Heating

During cooling operation, the vane adjusts upwards to direct air flow toward the ceiling. During heating operation, the van directs the air flow toward the floor to balance out the room temperature. A wireless controller is included with the indoor console unit.

Cooling



Heating (Normal)



Heating (Floor Heating Mode)



Quick Floor Heating

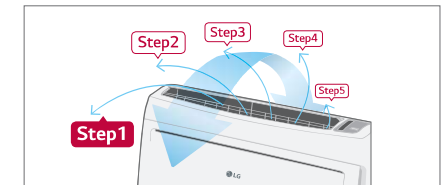
Console air conditioners portray high speed and powerful performance. Using the floor heating mode, console air conditioners provide floor heating at a faster pace in order to reach desired temperature more quickly.

	Company A	Electric Heater	LG	LG Floor Heating Mode
27°C	Vertical			
15°C	Horizontal			
	Lead Time for Heating (13°C - 21°C)	12 minutes 30 seconds	50 minutes	9 minutes 30 seconds

※ Test Condition : Target Temp 23°C, Indoor Room : 13°C-, Outdoor Room : 7°C

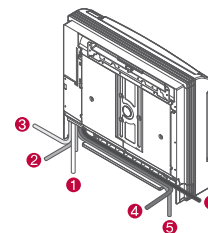
5-Step Vane Control

There are 5 different stages to control air flow direction.

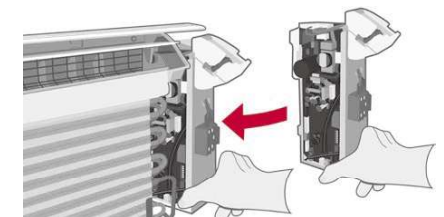


Easy Installation and Service

6 Different Ways to Install Piping



Easy Slide-type PCB



STANDARD INVERTER (R32)

UQ09F / UQ12F / UQ18F

UUA1 ULO UUB1 U20



LG participates in the ECP programme for EUROVENT AC program.
Check ongoing validity of certification
: www.eurovent-certification.com

COMBINATION				9	12	18
Capacity	Cooling	Min. / Rated / Max.	kW	1,5 / 2,6 / 3,4	1,5 / 3,5 / 4,0	2,0 / 5,0 / 5,8
	Heating	Min. / Rated / Max.	kW	1,6 / 3,1 / 3,9	1,6 / 4,0 / 4,3	2,0 / 4,9 / 5,4
Power Input (Set)	Cooling	Min. / Rated / Max.	kW	0,30 / 0,65 / 0,91	0,30 / 1,00 / 1,46	0,40 / 1,75 / 2,45
	Heating	Min. / Rated / Max.	kW	0,30 / 0,74 / 1,08	0,30 / 1,05 / 1,58	0,30 / 1,56 / 2,11
Running Current	Cooling	Rated	A	2,9	4,4	8,3
	Heating	Rated	A	3,3	4,7	8,0
EER / COP			kWh / kWh	4,00 / 4,20	3,50 / 3,80	2,85 / 3,14
SEER / SCOP			kWh / kWh	6,5 / 4,0	6,4 / 4,0	5,8 / 3,8
Pdesign	Cooling @ 35°C		kW	2,6	3,5	5
	Heating @ -10°C		kW	2,8	3	3,8
Seasonal Energy Label	Cooling / Heating		-	A++ / A+	A++ / A+	A+ / A
Annual Energy Consumption	Cooling / Heating		kWh	140 / 980	191 / 1,050	302 / 1,396
Dehumidification Rate			l/h	0,7	1,3	2,4
ODU Sound Pressure Level	Cooling / Heating	Rated	dB(A)	49 / 52	49 / 52	47 / 52
	Cooling	Rated	dB(A)	65	65	63
Piping Connections	Liquid		mm (inch)	Ø6,35 (1/4)	Ø6,35 (1/4)	Ø6,35 (1/4)
	Gas		mm (inch)	Ø9,52 (3/8)	Ø9,52 (3/8)	Ø12,7 (1/2)
Operation Range (Outdoor)	Cooling	Min. / Max.	°C	-15 / 50	-15 / 50	-15 / 50
	Heating	Min. / Max.	°C	-20 / 18	-20 / 18	-20 / 18
INDOOR				UQ09F NAO	UQ12F NAO	UQ18F NAO
Power Supply			Ø / V / Hz	1 / 220-240 / 50	1 / 220-240 / 50	1 / 220-240 / 50
Power Input (IDU)		H / M / L	W	37 / 30 / 25	37 / 30 / 25	44 / 39 / 35
Air Flow Rate		H / M / L	m³/min	8,5 / 6,7 / 5,0	8,5 / 6,7 / 5,0	10,1 / 8,6 / 7,2
Dimensions	Body	W x H x D	mm	700 x 600 x 210	700 x 600 x 210	700 x 600 x 210
Weight	Body		kg	16,3	16,3	16,3
Sound Pressure Level	Cooling	H / M / L	dB(A)	38 / 32 / 27	38 / 32 / 27	44 / 39 / 35
Sound Power Level	Cooling	Max.	dB(A)	59	59	60
Piping Connections	Drain	O.D. / I.D.	mm	Ø16,7 / 12,2	Ø16,7 / 12,2	Ø16,7 / 12,2
OUTDOOR				UUA1 ULO	UUB1 U20	
Power Supply			Ø / V / Hz	1 / 220-240 / 50	1 / 220-240 / 50	
Circuit Breaker		Min.	A	15	20	
Power Supply Cable (Included Earth)			No x mm³	3C x 1,5	3C x 2,5	
Dimensions	Net	W x H x D	mm	770 x 545 x 288	870 x 650 x 330	
Weight	Net		kg	33,3	44,5	
Compressor	Type		-	Twin Rotary	Twin Rotary	
	Type		-	R32	R32	
	GWP (Global Warming Potential)		-	675	675	
	Precharged Amount		kg	1,0	1,2	
	t-CO ₂ eq		-	0,675	0,81	
Refrigerant	Additional Charge (After 7,5m)		g/m	20	20	
	Fan	Air Flow Rate	Rated	m³/min x No.	28 x 1	50 x 1
Total Piping Length		Min. / Max.	m	5 / 30	5 / 30	
Piping Elevation	IDU - ODU	Max.	m	30	30	

Note :

1. Due to our policy of innovation some specifications may be changed without notification.
2. Performances are based on the following conditions (It is accordance with EN14511)
 - Cooling : Indoor Ambient Temp 27°C DB / 19°C WB, Outdoor Ambient Temp 35°C DB / 24°C WB
 - Heating : Indoor Ambient Temp 20°C DB / 15°C WB, Outdoor Ambient Temp 7°C DB / 6°C WB
 - Interconnected Pipe is standard length and difference of Elevation (Outdoor - Indoor Unit) is 0m.
3. Sound Level Values are measured at Noise Measuring chamber accordance with standard. Therefore, these values depend on the ambient conditions and values are normally higher in actual operation.
4. This product contains fluorinated greenhouse gases. (R32)

FLOOR STANDING

